

YOCONA COTTON MILL

APPROVED BY:

Dr. George Fair

YOCONA COTTON MILL

Janice Lynn Quick - B.A., University of Memphis

RESEARCH PROJECT

Presented to the Faculty of
The University of Texas at Dallas
In Partial Fulfillment
Of the Requirements
For the Degree of

MASTER OF ARTS IN INTERDISCIPLINARY STUDIES

Comment [LEM1]: I'm guessing that your format here and on the title page are requirements, so I won't look at that.

TABLE OF CONTENTS

Acknowledgments

Abstract

Table of Contents

I. Introduction 8

II. Building a Public History Web Site 10

 1. PURPOSE OF PROJECT 10

 2. DESIGNING THE WEB SITE 10

 3. BUILDING THE WEB SITE 18

III. Site Content 22

IV. Continuing the Story 34

V. ENDNOTES 35

Bibliography
Primary
Secondary

Appendix

Vita

LIST OF TABLES, FIGURES and all others?

Comment [LEM2]: Don't forget to address this.

(dedication)

To employees of the Yocona Cotton Mill

Abstract

ACKNOWLEDGMENTS

... the many keepers of local history – genealogists, family historians, ... especially the Gurner family in Water Valley, Mississippi.

Teachers – Dan Langendorf, Vanessa Paugh, Dr. Michele Nickerson,

~~May~~ June 2009

Yocona Cotton Mill Workers

Telling Their Story

I. Introduction

~~Around~~~~but~~ 1908, Mary Penelope Sullivan Gillespie Sartin divorced her husband in Calhoun County, Mississippi. With five children under the age of ~~fourteen~~14, she lived ~~for~~ ~~awhile~~ with her father ~~for a while~~, who still had six children of his own living at home. By November 1911, Mary had moved to Water Valley, Mississippi, in neighboring Yalobusha County, Mississippi. There she joined others from her home town—including cousins—to work at the Yocona Cotton Mill, one of the few public places women could work. She was among many farming families, especially women, who moved from rural areas to work in nearby towns with cotton mills. ¹

~~The goal of t~~~~his project's~~ ~~goal~~ is to tell the story of these cotton mill workers and share it ~~with others~~ through the Internet, ~~compiling~~ ~~Using~~ contemporaneous photographs, census records, newspapers, and interviews with descendents, ~~the goal is to create a Web site that gathers all the information~~ in one ~~place~~ ~~Web site~~. ~~Serving as a~~~~The~~ centerpiece of the ~~Web site~~ ~~(and helping to identify the workers)~~ is a series of photographs from 1911 by National Child Labor Committee photographer Lewis Hine. These photographs ~~show~~ many of the people who worked at the mill. ~~The hope is that~~~~if successful~~, the Web site ~~will~~ ~~continue~~s to grow as audience members learn about the mill, identify their relatives, and add their own photographs and stories.

Comment [LEM3]: The information in this phrase seems unnecessary, and you make a similar point in the next sentence.

Comment [LEM4]: You can leave this as "show"; or you can change it to "identify" if that's more what you mean (as in the deleted phrase in the previous sentence).

This project completes the requirements for the Master of Arts in Interdisciplinary Studies, which ~~lets~~ allows students to take courses from multiple departments. In this case, the degree program focuses on public history and combines classes from the History, Marketing, and Arts and Technology departments. As the Public History Resource Center states, “Public History is history that is seen, heard, read, and interpreted by a popular audience”¹; and the purpose of the public historian is to “collect, preserve, and disseminate information on the past.”² ~~Thus, t~~The Yocona Cotton Mill project satisfies both definitions.

Comment [LEM5]: The sentence as originally written was actually a fragment.

This paper is divided into two sections. The first part describes the methodology used to create the Yocona Cotton Mill Web site—a methodology that can be used by the layperson for any public history Web site. The second part ~~consists of content about~~ describes the mill and the families who worked there.

Historical Overview

The Yocona Cotton Mill (variously spelled “Yocana” ~~or~~ “Yacana”) was also called the ~~“twine mill,” “thread mill,” or “cotton factory.”~~ However, it was most commonly referred to as “Yocona Cotton Mill” or just “Yocona Mills.” It was located in Water Valley, Mississippi, a town of about 3,800 hundred people in 1900³ in north-central Mississippi, ~~about~~ approximately 75 miles south of Memphis, Tennessee. Founded by local businessmen, the cotton mill began operating about 1880 and continued until it burned in April 1926. The mill produced twine, yarn, mop cord, and batts ~~—~~ but not cloth. Most newspaper articles, census records, and Sanborn™ fire insurance maps indicate the mill employed anywhere from 60 to 100 employees through the years.⁴

Comment [LEM6]: All these picky little quotation marks are needed because you are referring to these words as words (group of letters) and not simply to their meanings.

On May 11, 1911, documentary photographer Lewis Hine photographed Yocona Cotton Mill workers, including nearly two dozen children, as part of the National Child Labor Committee’s campaign to end child labor. Hine took ~~a total of~~ five photographs related to the

mill: ~~—~~three photographs of mill workers gathered ~~together~~ on the loading dock at the west side of the main factory building, one photograph of mill houses, and one photograph featuring a single mill family—the Eubanks ~~family~~. In a testament to the enduring emotion and importance of ~~Lewis~~-Hine's work, these photographs are available online at the Web sites of both the National Archives and the Library of Congress. ⁵

II. Building a Public History Web Site

1. PURPOSE OF THE PROJECT

The purpose of the Yocona Cotton Mill Web site is ~~three-fold~~: 1) sharinge photographs and stories about the Yocona Cotton Mill workers, 2) encouraginge others to comment and share their stories ~~as well~~, and 3) provinge that a layperson can create a public history Web site using free Internet tools without being a computer expert. The Yocona Cotton Mill Web site is online at <http://www.yoconamill.wordpress.com>.

Comment [LEM7]: I looked this up to be sure.

2. DESIGNING THE WEB SITE

To ensure a Web site connects with its audience and achieves its goals, many Web site designers use a “best practice” design process called “user-centered design.” Using this process helps Web site developers understand their audience, prioritize content, and make the site easy to use. If the site is not easy to use, readers will ~~not~~ spend ~~as much~~little time on the site; ~~and~~ ~~and will be~~ ~~will not~~ unlikely to add their own photographs and stories. ~~Thus~~ Therefore, the site would ~~fails~~ in its goals of engaging an audience and growing ~~the site~~. ⁶

Creation of tThe Yocona Cotton Mill Web site followed ~~the~~ “user-centered design” process. The major steps in this process ~~were~~: 1) identifying site goals 2) identifying target

Comment [LEM8]: Once you've introduced a phrase with quotes, you don't need to continue using quotes on further references.

Comment [LEM9]: Punctuation rule used here says that you can't follow a verb with a colon; you can follow an adjective, noun, or a noun-form (such as “the following:” because “following” is a gerund.)

audiences, 3) identifying user tasks and goals, and 4) creatinge a site map to illustrate the site's content and navigation. The following ~~is a summarizesy of~~ this process as it relates to the Yocona Cotton Mill Web site. ⁶

Site Goals

First, identify the overall site goals ~~of the site~~. To fight the temptation to include everything on a site, priorities must be set ~~it is important to set priorities~~ ~~to~~ determininge what you really want to accomplish ~~and to answer~~ing the question ~~of~~ "How will we know the site is successful?" The goals for the Yocona Cotton Mill Web site are the following:

- Tell the story of the Yocona Cotton Mill workers.
- Share Lewis Hine photographs and other artifacts of the Yocona Cotton Mill.
- Allow others to add comments, stories, and photographs ~~to the site~~
- Demonstrate ~~show~~ that ~~it is possible for the a~~ layperson ~~to can~~ create a successful public history Web site.

Comment [LEM10]: You could also reword this last half of this sentence this way: "and to find a specific way to measure its success." You could also use something like "accurate" or "feasible" in place of "specific" in my suggested phrasing.

Comment [LEM11]: All these bullets need periods at the end because they are complete sentences—commands (imperative sentences) with an understood "you" as the subject.

Target Audiences

Second, identify the primary and secondary audiences. Because the ~~goal of the~~ Yocona Cotton Mill Web site is designed to tell the story of the workers and encourage others to share their stories, the primary audiences are descendants of the mill workers ~~and as well~~ as others related to the mill or the town of Water Valley. Specifically, the target audiences for this site, in order of importance, are the following:

1. Descendants of Yocona Cotton Mill workers (primary)
2. Family and local historians interested in Water Valley, Mississippi, and the surrounding region (primary)

Comment [LEM12]: When you get to your numbered list of audiences below, do you want to designate which are primary and which are secondary? You could do this by adding "(primary)" or "(secondary)" after each description. I took a stab at it below, so correct it if I got it wrong.

Comment [LEM13]: These bullets don't need periods because they are only phrases; no verb/predicate at all.

3. Larger community of family historians, academic historians, photographers, and Web designers interested in cotton mills, Mississippi history, public history, early documentary photography, and Lewis Hine (secondary)

User Tasks and Goals

Third, determine user ~~goals~~ tasks and ~~tasks~~ goals by interviewing members of the target audiences. ~~The purpose of t~~This step ~~is to~~ should guarantee that the intended audience a ~~site can be~~ easily use the site ~~d by the intended audience~~. What seems simple and reasonable to a Web designer familiar with the topic may not be obvious to a person using the site.

Comment [LEM14]: The only reason I changed the order here was to match the order in your heading in the line above.

Therefore, after identifying descendents and other audience members, ~~and~~ determine the following for each group: Are they young adults or senior adults? What vocabulary do they use? What is important to them and their research? Ask questions ~~like~~ such as: “How do you normally ~~do~~ perform genealogy research? How often do you use the Internet, and how comfortable are you with ~~the Internet~~ it?” Also, because there is a difference between what people say and what they actually do, probe for specific examples, ~~like~~ such as: “Tell me about the last time you used the Internet to research your family history. What did you do? What site did you go to? Were you successful? Why or why not?”

Personas

Using ~~As a~~ the results from ~~of~~ the user interviews, develop a *persona*, or profile, of representative users. A persona creates a “picture” of the user that designers ~~to~~ refer to while designing. Because designers become so familiar with their topic, creating a ~~picture of~~ the user persona helps ~~designers~~ them overcome their ~~too~~ sometimes handicapping familiarity with the ~~topic~~ site's content. A user persona normally includes a photograph, level

Comment [LEM15]: I'm not sure my suggestion is exactly what I'm trying for, but it may help you think of something better if it's not close enough.

of computer experience, familiarity with the topic, and a story (or list) that illustrates what the user ~~is hoping~~ to accomplish when visiting a Web site. ~~For~~ The Yocona Cotton Mill ~~Web site, the~~ personas focused on the audiences' Internet experience when ~~doing~~ performing online genealogical research. Typically, a single persona is created for each of the most important target audiences, ~~which means the~~ resulting in a persona that is a ~~evolves as a~~ composite of the experiences of several interviewees.

Comment [LEM16]: Normally, boldface is used for emphasis, but your thesis format requirements may be different.

Formatted: Font: Not Italic

Persona **R**representing the ~~4st~~ **F**irst **T**arget **A**udience:

Descendents of Yocona **C**otton Mill Workers

Descendent of **Y**ocona **C**otton Mill Worker

Bob has been researching his family history for more than ~~twenty~~ **20** years. He grew up in West Tennessee, where his family ~~came~~ **arrived** in 1918 looking for work in cotton mills. He knows his family ~~has~~ **was** ~~lived~~ in and out of Mississippi since the Civil War and for a while lived in Water Valley, Mississippi, ~~and~~ **presumably** ~~work~~ **inged** in a cotton mill there. As ~~he~~ **Bob** ~~says~~ **id**, “**T**he cotton mills were a big part of their lives.”



Caption 1 - placeholder photo for Bob

Internet Experience

Since retiring from the post office, Bob spends more time on the Internet, but is not ~~that~~ **entirely** comfortable with it. He can do basic things, but he asks his grown children for help when they visit. Highly motivated to share family history, Bob leaves and answers messages on genealogy bulletin boards, ~~like~~ **such as** RootsWeb.com.

Goals

Bob's goal is to share family history. He loves meeting long-lost cousins and discovering how they are related. ~~And~~ **Additionally**, he loves old family photographs. To share his information, he has put together a family history book and organized more than one family reunion. To find family members, he regularly checks the RootsWeb.com message ~~and~~ **boards** and the Yalobusha County, Mississippi, Web site sponsored by The USGenWeb Project.

Tasks

Because finding and sharing information is most important to him, Bob will use the Yocona Cotton Mill Web site to **perform the following tasks**:

- ~~Find out~~ **Discover** if his family was connected to the mill.
- ~~Check out~~ **View** the photographs.
- Print photographs of the mill and mill workers.
- Leave comments and see if anyone ~~has~~ **responded** to ~~his~~ **comments** ~~them~~.
- Look for contact information of the site owner and others who post comments.

Comment [LEM17]: I wouldn't italicize these; bulleting makes them stand out well already.

Persona for Representing the 2nd Target Audience:

Family and Local Historians Interested in Water Valley

Family Historian

Fran is an auditor by day and a family historian by night (~~and along with~~ weekends and whenever she can squeeze in a few hours without alienating her family.) She has been doing researching genealogy for about approximately 20 years and has shifted her focus from adding more generations to her family tree to adding more stories about her own family. She lives in Texas, but has ancestors from Mississippi.



Internet Experience

Fran prides herself on being computer literate. She has a Macintosh and, of course, loves it. She is the newsletter editor and Web master of her local genealogy society. She does most of her research at home, where she has a home office, a connection to the Internet, and subscriptions to a couple of genealogy Web sites.

Goals

Fran wants to “add flesh to the bones” of her ancestors. In other words, she wants to learn more about the history and times of their lives. In addition to searching genealogy databases, ~~sometimes~~ she sometimes just simply goes to Google, enters family names, county names, or related topics (such as “Melungeons,” “Methodist preachers in Mississippi,” “cotton mills,” ~~and or~~ “Water Valley”) to see what ~~she comes up with~~ appears. This ~~is method how she~~ would likely find bring her to the Yocona Cotton Mill Web site.

Tasks

Because she knows how unreliable the Internet is can be, Fran carefully evaluates a Web site to see if it is credible, by checking sources. She also notes, ~~and how frequently it is its~~ updated frequency. ~~Then Finally,~~ she evaluates the site’s content against what she already knows about the topic. Specifically, Fran will do the following:

|

Comment [LEM18]: I’m not sure if you should use this in a thesis, but I know exactly what you’re saying!

Comment [LEM19]: Does she get a caption like Bob did?

Comment [LEM20]: Again, I probably wouldn’t italicize the bullets.

- Look for citations ~~of~~ for the sources.
- Look for 'last updated date.'
- Evaluate the site based on a general impression: ~~-~~ - Does it look professional?; ~~is~~ is it well-written? - is it easy to grasp what's on the site and where to find it?
- Determine if ~~there is~~ information about her family is on the site.
- Read about the mill and the families that worked there.

Site Map

Formatted: Keep with next

Fourth, armed with the ~~results of the~~ site goals and ~~the~~ results of the user research, the next step is to structure the site and determine ~~the~~ its navigation. The most common way to document this step is to create a site map—a “high-level diagram that depicts the overall organization of a site,”⁷ —where each block represents a page ~~of~~ in the Web-site.

Formatted: Not Superscript/Subscribe

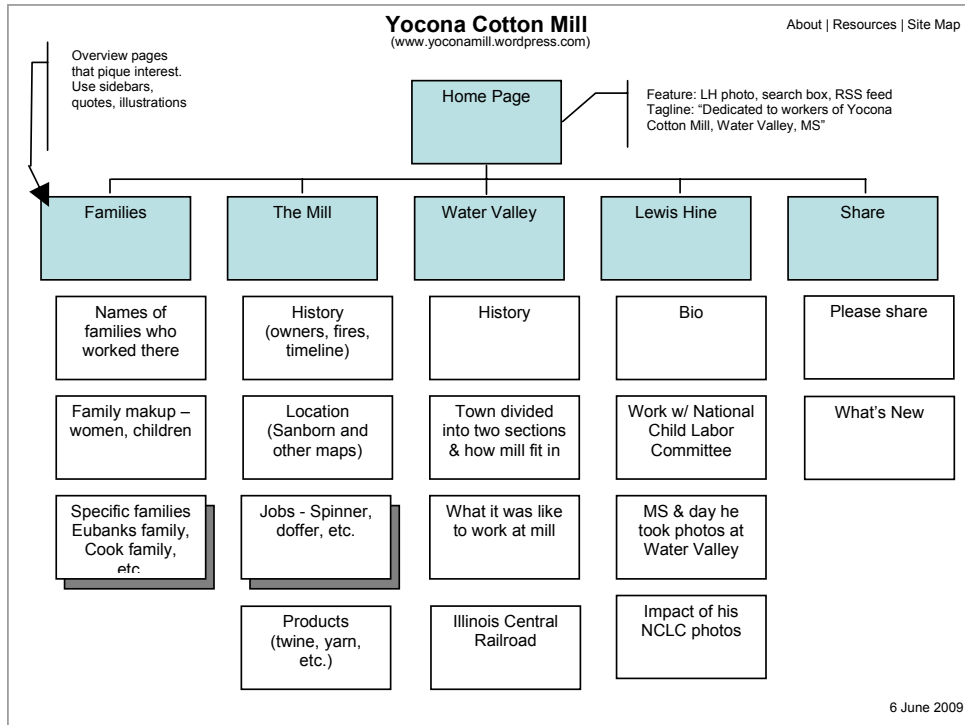


Figure 2 - Site map for Yocona Cotton Mill Web site

3. BUILDING THE WEB SITE

Building a Web site can be broken down into the following steps: 1) choosing the software/form, 2) developing a prototype, 3) usability testing to verify site design, and 4) adding content.

Choosing Software

In building a ~~personal~~ public history Web site, the best solution allows the site owner to focus on content—not programming. The solution ~~needs to~~ should allow ~~include~~ static pages as well as allowing users to post comments. ~~And~~ Additionally to encourage ~~many~~ more laypersons to become involved, the software tool ~~needs~~ should ~~to~~ be free. Blogging software, ~~like~~ such as Blogger and Wordpress, meets these needs.

Wordpress was selected for the following reasons: First, it is not necessary to set up a unique Internet domain name. Instead, ~~you~~ site owners can create an account just as ~~you~~ they would create an email account. Second, Wordpress provides its own editor for entering text and uploading photographs and audio. Third, Wordpress has pre-designed visual layouts, called “themes,” to create visually pleasing sites without requiring a graphic artist. Fourth, Wordpress allows readers to add comments to any page or post. Although blogging software is generally ~~created with the goal of~~ designed to ~~keeping~~ a constantly updated journal, ~~because it allows static pages~~, it can be adapted to a variety of uses. because it allows static pages.

Developing a ~~P~~prototype

A prototype is a stripped-down, but functioning, Web site. ~~In a prototype~~ ~~m~~Most prototype pages do not display actual content; ~~instead the pages~~ but instead describe the content that will eventually be on the page. A prototype does, however, show the navigation

and is useful for validating ~~the-its~~ design before completing ~~site~~ development-~~of-the-Web~~ ~~site~~. The ease of ~~using~~ Wordpress, like ~~that of~~ other blogging software applications, lends itself to creating a prototype. The following screen ~~shot-capture~~ shows the ~~prototype~~ Yocona Cotton Mill home page ~~from-the-prototype~~.



Figure 3 - Screen ~~Shot-capture~~ of Yocona Cotton Mill ~~h~~Home ~~p~~Page (from ~~prototy~~pe)

Usability Testing

Usability testing asks members of the target audiences to evaluate a Web site (or site design) to verify ~~that~~ a site is "easy to learn and use." The goal is to identify problems ~~early~~ so they can be corrected before the site is ~~built-and~~ released to the public. ⁸ Using the Yocona Cotton Mill prototype, participants, ~~(including some of the users interviewed earlier),~~

were asked to complete specific, structured tasks in addition to ~~general~~ exploration ~~ing~~ of the site. The structured tasks were based upon user tasks discovered during the user interviews. (See Appendix A for a copy of the Usability Plan and Script.) During ~~the~~ usability tests, participants were encouraged to "think aloud," a commonly ~~used~~ protocol that asks participants to "provide a running commentary of their thought process," that ~~includes~~ ing expressing "their confusion and frustration." ⁹

Comment [LEM21]: If it ends in -ly, you don't need the hyphen to make it a compound modifier.

The table below summarizes the usability test objectives of the Yocona Cotton Mill Web site and the test results. ~~Based on the results,~~ Changes were made to the navigation and other components based on the results ~~of the Web site~~.

Usability Test Objectives	Usability Test Results
Is the purpose of the site obvious from the <u>h</u> Home <u>p</u> Page?	The purpose of the site was not always obvious. Users understood the site was about the Yocona Cotton mill, but were not immediately able to determine the "who, what, where, when, etc." about the mill.
Do users understand the terminology used as <u>for</u> the main navigation?	The Wordpress template chosen for the Yocona Cotton Mill site uses the term " <u>f</u> Front <u>p</u> Page" in place of the more familiar term " <u>h</u> Home page." The term " <u>f</u> Front <u>p</u> Page" was confusing to users. Users did not recognize that "Water Valley" was the name of the town. Other navigation terms that were confusing were "blog" and "about." Asked to rate the ease of using the Web site on a scale of 1 to 7 (with 7 being the highest rating), users gave the site a rating of <u>ratings</u> <u>averaged</u> 6.25.
Can users find and use the <u>s</u> Search feature?	Only <u>some</u> users were able to find the <u>s</u> Search feature. And f <u>o</u> r those users, the search results were displayed in an unfamiliar manner so that it was not clear how to navigate search results.
Can users find citations?	<u>Some</u> users saw citations and some did not.
Do users feel the site is credible? What would make it more credible?	Asked to rate the credibility of the Web site on a scale of 1 to 7, where 7 was "Very Credible," users <u>ratings</u> ed the site a <u>averaged</u> 6.

Comment [LEM22]: I'm guessing that you averaged the ratings? Or did you use median or mode instead?

Comment [LEM23]: Can you be more specific? Such as "only a few" or "a small percentage" or "not all users" or something to give an idea of whether "some" means a lot or just that it wasn't a full 100 percent who could find it.

Comment [LEM24]: Again, can you give a ballpark idea of whether it was a lot or a few who could/couldn't? Or pretty equally split?

Comment [LEM25]: Did you use an average here?

Usability Test Objectives	Usability Test Results
	<p><u>When Asked</u> what would make the site more credible, users' responses ded included with: footnotes at the bottom of the page; better description of the site owner's credentials; more citations and sources; and a Contact Us section.</p>
Can users add a comment?	Yes, most users found the comment box and felt comfortable with it.
Other general comments	<ul style="list-style-type: none"> • "Like the old picture. Adds depth" • "Hope to see a list of people." • "Add people's names to photo captions." • "What intrigues me are the children in the photos. Good grief!" • "Be more specific about how people can submit their family's information"

Adding Content

Next, as the research continues and more information is gathered from audience members about the mill, more content ~~will be added~~ to the Web site. The process will be iterative—add content, receive feedback, and make changes. Because the site is live, ~~and~~ users can post feedback ~~can be posted~~ directly to the site.

Comment [LEM26]: By the site owner, or users, or both? You probably need to be specific about that here.

Comment [LEM27]: Is "interactive" a better word here?

The next section of the paper describes the site's historical content.

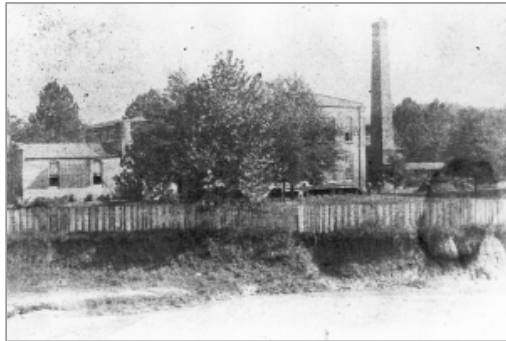
III.Site Content

History of the Mill

In 1897, the *Water Valley Progress*, a local newspaper, devoted an entire issue to “A Brief Sketch of the City’s Progress During the Past Eighteen Months.” The issue included ~~was~~ a photograph and brief description of the Yocona Cotton Mill.

Comment [LEM28]: Did you mean to boldface this?

Formatted: Font: Not Bold



Although partially obscured by very large trees, ~~there seems to be~~ a two-story main building, made of brick, ~~appears to be visible~~. If you look closely, you can see three people standing in front of the buildings, giving perspective to ~~the its large size of the building — it was quite large~~. The *Water Valley Progress* said the cotton mill “employs 100 operatives” and “manufactures yarns, batts, and wrapping twine.”

Formatted: Font: Not Bold

Formatted: Font: Not Bold

In the early 1900s, another photograph of mill workers appeared, perhaps in the same newspaper. (Its source has not ~~yet~~ been determined ~~yet~~.) Notice the small children in the photograph.

Formatted: Font: Not Bold



Presumably these children worked at the mill, perhaps supervised by their parents. Mississippi did not prohibit child labor until 1908, which would have been a few years after the time I believe this photo was taken.

This page will also include (or link to) the following information about the mill:

1. Founded in the late 1860s as part of a general rise of cotton mills in the South
2. Owned (later) primarily by the Wagner family
3. Managed by Charles Romberger for years
4. Produced products like twine and mop cord
5. Burned in a fire on January 13, 1911
6. Photographed by Lewis Hine in May 1911

Comment [LEM29]: Can you give an idea of how many? “Years” is pretty vague.

7. Destroyed by fire in 1926-

THE MILL

Introduction

Following the Civil War, many Southern business leaders believed industry, rather than the earlier reliance on growing cotton, was key to lifting the South economically.¹⁶ Mississippi followed suit. In an attempt to attract new industry, the Mississippi State Legislature passed a law granting tax exemptions to new manufacturing firms. The result was an increase in cotton mills, woolen mills, and timber. Among these new mills was the Yocona Cotton Mill in Water Valley.¹⁵

Comment [LEM30]: Your citation/footnote references here contain the author's name as well as the footnote number; pick which style you want to use and make it consistent throughout.

Comment [LEM31]: Sometimes you use two spaces between sentences; other times, one. Pick one of them as a standard (I like two for readability purposes) and then set your spell and grammar checker to the one you use before reviewing again.

1860s – The Beginnings

Efforts to bring a cotton mill to Water Valley began in December 1865, when a group of local men formed a joint stock company. Initially, the goal was to entice the Mississippi Central Railroad (later the Illinois Central Railroad) to locate repair shops and terminal yards at Water Valley. Toward that end, in (December?) 1865, the group purchased land in the northern part of Water Valley from Rasha Robinson. The one-mile-wide piece of land was located between Clay and Lafayette streets, just north of Court Street. In legal terms, this land consisted of the North ½ of Section 4, Township 11, Range 4 West.^[11 1926] Part of the land was donated to the Mississippi Central Railroad to (entice, further, ??). Some Other parts were land was sold to individuals for homes and businesses to finance the group (?). The remaining land was used for an unspecified manufacturing plant.^{11 (1926)}

Comment [LEM32]: Don't forget to fix this.

Comment [LEM33]: Don't forget to fix this.

Comment [LEM34]: Don't forget to fix this.

Comment [LEM35]: Don't forget to fix this.

The original stockholders were: A. J. McConnico, F.A. McConnico, A.W. West, G. Burgland, S.C. Brewer (Trustee for M. P. Phillips and T.G. Brewer), J. M. Gafford, T.A. Lewis, M.A. Ross, S. Band, Jesse Addington, H.L. Duncan, and Thos. E. Avent.^{11 1926} Occupations of the stockholders ~~were~~ varied. For example, the 1870 census shows Andrew J. McConnico as the Secretary of the Mississippi Central Railroad, Mark A. Ross as a dry goods merchant,^{18 census} and Theodore A. Lewis as a physician.^{22 census}

However, by February 1867, when the Mississippi [State](#) Legislature approved the company's charter as a corporation, under the name of Water Valley Manufacturing Company (verify), ~~its~~ [the company's](#) goals had expanded. In addition to "railroad purposes," the charter authorized ~~them~~ [it](#) to conduct a variety of businesses, including erecting "factories for manufacture of cotton and woolen goods" as well as banking and real estate businesses.^{11 (1926)}

Comment [LEM36]: Don't forget to fix this.

The company experienced several false starts. In 1868, Gus Burgland, stockholder and manager of , brought "a colony of about a hundred persons from the northern part of Sweden" to work in the manufacturing plant. Unable to adjust to the heat of a Mississippi summer, the Swedes became ill, and "the new factory had to be turned into a hospital."^[25 Brown] According to Goodspeed's *Biographical and Historical Memoirs of Mississippi*, the cotton factory was nearly complete when the business failed, and the factory stood idle for some years. (reword some more)^{14 Memoirs}

Comment [LEM37]: Don't forget to fix this.

Comment [LEM38]: Don't forget to fix this.

1870s

During the 1870s, financial problems continued. To encourage stock subscriptions, the Water Valley Manufacturing Company asked the Mississippi Legislature in to amend its charter and reduce the [stock](#) value ~~of steek~~ from \$500 to \$50. Although subscriptions increased, many subscribers did not pay.^[26_court case] Eventually, in 1877, the

Comment [LEM39]: Don't forget to fix this.

corporation reorganized, becoming Yocona Mills. (?) Wagner and company, under the direction of Daniel R. Wagner, became owners. [11 newspaper] and “imported the machinery at once;” — and the Water Valley Manufacturing company, which had begun operations in 1866, was formally merged into the concern controlling the mills. 14 Memoirs ??

Comment [LEM40]: Don't forget to fix this.

Comment [LEM41]: Don't forget to fix this.

1880s

By 1880, the census shows...

Comment [LEM42]: Don't forget to fix this.

Despite hardships, Yocona Mills was up and running by 1883. *Appleton's Annual Cyclopaedia and Register of Important Events of the Year 1883* reports that there were 14 cotton or woolen factories in Mississippi in 1882, including the “Yocona cotton—yarn mills at Water Valley.” [27]

Formatted: Font: Not Bold

Formatted: Font: Not Bold

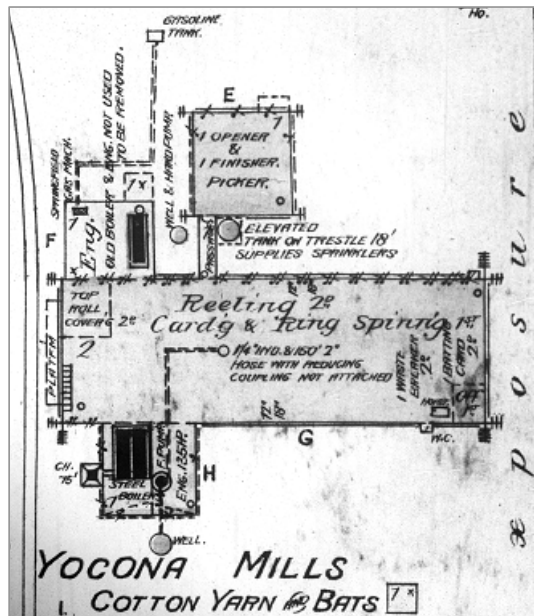


Figure 4 – Sanborn™ Fire Insurance Map, 1885.

The first Sanborn™ Fire Insurance Map for Water Valley, created in 1885, included the mill, which it said was located, it said, three-fourths of a mile north of the railroad depot. The Sanborn™ map shows the main building (how long etc.) where On the north side is the picker room, where pickers opened cotton bales and removed dirt and twigs, is on the north side. On the south side is the boiler room, with a 75-foot chimney or “smoke stack” that was a

Comment [LEM43]: Don't forget to fix this.

Comment [LEM44]: Don't forget to fix this.

Water Valley landmark for many years. [28 Thelma]. To the west is the railroad spur used to unload bales of cotton and ship finished products. Sanborn™ described the mill as having:

60 to 75 employees; 4,500 spindles; ~~with~~ and steam power and gasoline lights. Assessing the risk for fire, Sanborn-™ declared the mill “not a tidy risk.” [29 Sanborn]

In 1888, the Davison Blue Book reported that the mill “makes yarns and batting; has two batting cards, 5,000 spindles, and two boilers.” C.E. Romberger is recorded as superintendent, a position he held until 1926 when fire destroyed the mill.

Growth of the mill during the decade was perhaps helped along by the State of Mississippi. To encourage manufacturing growth, in 1882 the Mississippi State Legislature, ~~in 1882~~, passed an act “exempting from taxation, for ten years, the machinery used for the manufacture of cotton & woolen goods, yarns or other fabrics.” [footnote]

Comment [LEM45]: Which decade?

Comment [LEM46]: Don't forget to fix this.

1890s

During the 1890s, Yocona Mills maintained about the same level of operations. And ~~add a little more here~~ [30] Mississippi, as well. [Strickland] However, historian Westley

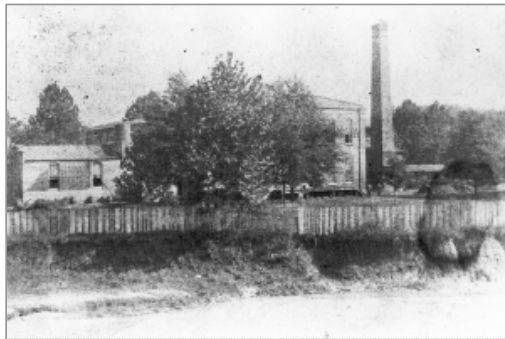


Figure 5 - Yocona Mills photograph from xxx newspaper, Water Valley, 1897.

Busbee argues that this is a very small number. “It was remarkable that in a cotton-producing state, only nine major textile mills were in operation in 1890.” One reason Busbee gives for slow growth is that “the state’s agricultural heritage and the educational deficiencies of its overwhelmingly rural population fostered a

persistent attitude that corporations were evil and people should earn their living from the land.” ^{23 busbe} By the end of the decade,...

Comment [LEM47]: Fix the “xxxx” in the Figure 5 caption.

Comment [LEM48]: Use “around” or “approximately” instead.

Comment [LEM49]: The same level as what?

Comment [LEM50]: Don't forget to fix this.

Comment [LEM51]: Don't forget to fix this.

Early 1900s

In the midst of the Progressive era... The decade of the National Child Labor Committee, which started in 1904 to illuminate and end child labor. The 1900 census for Water Valley shows Jones Street, the primary neighborhood surrounding the cotton mill. Thirty one workers are listed: —half are 18 years old and or younger, including three nine -year olds and one seven -year old. Only two children working at the mill attended school during the year. The boys' occupations are oiler, carder, ... The girls' occupations are reeler, spinner, |
— In 1908, Mississippi Mississippi, responding to..., passed a law “making it illegal for factories to hire young children under age 12 to work in factories and established a 19-hour work day and a 58-hour work week.” [Cresswell] How did this law affect Yocona Mills? In 1910, how many children?

Comment [LEM52]: Don't forget to fix this.

Comment [LEM53]: Use the hyphen when it's used as a modifier, as in "three nine-year old boys." Don't use it when "nine year olds" is used as a noun, as here.

Comment [LEM54]: Don't forget to fix this.

Comment [LEM55]: Don't forget to fix this.

Comment [LEM56]: Don't forget to fix this.

Comment [LEM57]: This sentences looks unfinished.

Fire of 1911

1911 was a pivotal year for Yocona Mills. In January 1911, the *North Mississippi Herald* reported one of several fires at the cotton mill. The fire started about 6:30 a.m. in the picker room. As soon as the fire was discovered, employees shut down the mill and reported the fire. However, “mill hands” had put out the fire by the time the fire department arrived. Officials speculated the fire began when a piece of iron wedged into the picker machine created a spark and ignited cotton in the machine. [a picker machine is] The picker machine was damaged, and about approximately \$500 worth of cotton was destroyed. Damages were covered by insurance.^{12 1911}

Comment [LEM58]: Don't forget to fix this.

Lewis Hine Includes Yocona Cotton Mills in NCLC Photographs

Later that year, in May, Lewis Hine, on behalf of the National Child Labor Committee (NCLC), visited Water Valley and photographed the Yocona Cotton Mill workers. His photographs showcase the number of children working there.

Fire of April 1926 Destroys Mill

The largest fire at the Yocona Cotton Mill occurred in April 1926. The fire started in the boiler room at 3:15 p.m., Tuesday, April 27, and destroyed the entire mill. The fire department was unable to control the fire and it spread "to the entire factory and out buildings and storehouses." Total damages were estimated at \$150,000 to \$200,000. Buildings and machines were estimated at approximately \$100,000 of that total. Thus, the 75 bales of lint cotton, manufactured products, and twine also destroyed in the fire must have been worth \$50,000 to \$100,000. The newspaper states that the losses were only partially covered by insurance.^{11 1926}

Although the mill presumably stopped operating in 1926, the *Yalobusha Democrat* reported another fire at the mill in 1930. This time the fire started ~~about~~ around midnight in the "cotton shed" and was perhaps caused by a cigarette "carelessly tossed aside by someone." The fire damaged ~~over~~ more than 400 bales of cotton and ~~about~~ approximately \$5,000 worth of manufactured goods—twines and yarns—for a total of \$25,000 worth of damage. The newspaper said there was no insurance to cover the losses.^{13 1930}

By 1932, the Sanborn-™ Fire Insurance map shows the brick smokestack and part of the engine room as the only remains of the factory building. ~~There is a~~ A small building labeled "old planning mill" stands where the factory used to be. A vacant building sits where the "baled cotton" warehouse ~~used to be~~ was at the south end of the railroad spur.^{20 sanborn}

^{map} In a corrected 1932 version, created ~~xxxx~~, none of the buildings, including the smokestack, ~~are~~ is left. Instead, the map shows a business called "C.E. Stringe" ~~which that~~ consists of small buildings labeled "saw mill," "planning mill," and "dry kiln." Immediately adjacent to the area of the former cotton mill are the Republic Creosoting Company and Belmont Lumber Company.^{21 sanborn map}

Comment [LEM59]: Don't forget to fix this.

Comment [LEM60]: Because "of the buildings" is a prepositional phrase modifying the always-singular word "none," you have to use the singular verb "is" with it. It's quite tricky if you don't remember to disregard the prep. phrase first; believe me, I still do it myself sometimes.

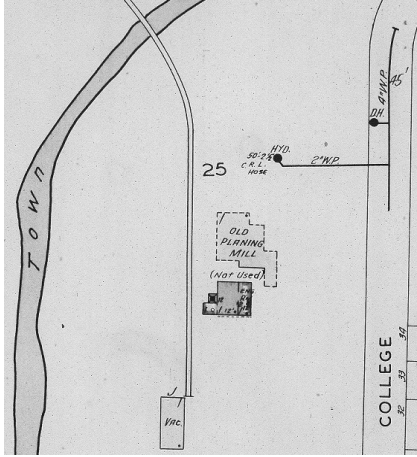


Figure 6 - 1932 Sanborn™ map

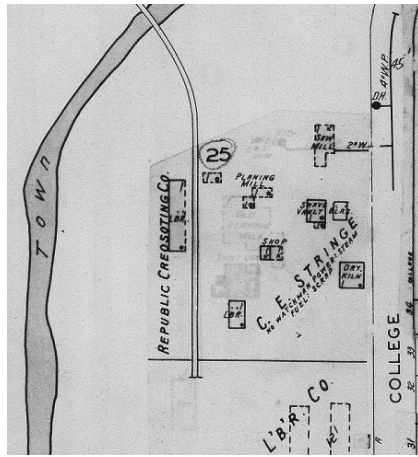


Figure 4 - 1932 corrected Sanborn™ map

Products

.” The value of this property to the city may easily be estimated when it is known that seven hundred and fifty thousand pounds of cotton are consumed yearly, and the gross earnings amount to nearly \$40,000, a large part of which is paid to operatives, and the surplus of profit on the capital invested, goes into investment here. MOVE 14 memoirs

Location

Use county highway map and show section four

Comment [LEM61]: Don't forget to fix this.

THE TOWN OF WATER VALLEY, MISSISSIPPI

Water Valley, ~~located~~ lies about approximately 85 miles southeast of Memphis, Tennessee, in the middle of rolling hills. The area was first settled ~~about around~~ the time the county (Yalobusha) ⁹ was established, in 1833, following the Treaty of Pontotoc ~~in~~, 1832, with the Chickasaw Indians. [Heritage c-1].

Comment [LEM62]: Don't forget to fix this.

~~The town was n~~Named "Water Valley" because, ~~geographically~~, the area is a small valley through which Town Creek runs. [WPA] Incorporated in 1858 [WPA and WV CofC]. Water Valley consists of a long main street, running north and south. Businesses line most of the west side of Main Street. The railroad tracks run parallel to Main Street ~~just~~ immediately to its east ~~of the street~~. The railroad depot was located at the south end with ~~and~~ the railroad shops ~~were located to the~~ north of the depot.

Comment [LEM63]: Don't forget to fix this.

Comment [LEM64]: Don't forget to fix this.

This ~~is layout is~~ significant because the shape of the town ~~reflected and~~ developed out of the primary businesses. -Yocona Cotton Mills was located at the north end of town. This area was considered [...].

Comment [LEM65]: Don't forget to fix this.

Historically, the most important industry (biggest enterprise) in Water Valley was the railroad. Originally started as the Mississippi Central Railroad in 1852, it was intended to connect Jackson, Mississippi, and the Mississippi-Tennessee state line east of Memphis, ~~Tennessee~~. In 1858, funds ran out, leaving an 86-mile gap. ~~So~~ Therefore, for two years, passengers and mail coming from Memphis were unloaded in Water Valley and carried by stagecoach 86 miles south to Goodman, Mississippi, [Early years C-20] where they boarded another train and continued south to Jackson, ~~Mississippi~~, and then on to New Orleans.

Comment [LEM66]: You've already mentioned it enough in this paragraph that it's clear it's Tennessee.

Comment [LEM67]: Don't forget to fix this.

Comment [LEM68]: You've already mentioned it enough in this paragraph that it's clear it's Mississippi..

In 1860, after receiving funds from Mr. Peabody, the railroad was completed – making a straight line from ?? to New Orleans. In 1861, another line from Memphis to Grenada, Mississippi, was completed ??.

Comment [LEM69]: Do you know a first name?

Comment [LEM70]: Don't forget to fix this.

Comment [LEM71]: Don't forget to fix this.

Comment [LEM72]: Don't forget to fix this.

During the Civil War, [chamber] Northern Union forces destroyed most engines, cars, and tracks of the railroad. However, following the war, the railroad was rebuilt, and in 1866, the first repair shops and offices were established in Water Valley. [C-20]

Comment [LEM73]: Don't forget to fix this.

In 1878, Water Valley ~~was made~~ became a second county seat for the Yalobusha County ~~of Yalobusha~~. [WPA]

Comment [LEM74]: Don't forget to fix this.

In the 1880s, the Illinois Central Railroad absorbed the Mississippi Central, enlarging the railroad shops, “until it became the largest on the southern line of the railroad, employing in the 1910s and 1920s as many as 800 men in the shop along.” [Heritage C-12] The impact effect was felt as Water Valley ~~was~~ became the largest city in North Mississippi from 1900 to 1910. [Facts]

Comment [LEM75]: Is the last part of this sentence missing, or is this just how they said it back then?

Comment [LEM76]: Don't forget to fix this.

Comment [LEM77]: “Impact” is only supposed to be used when it's a literal, physical blow/hitting type of impact. ..even though everyone and his dog uses it this way!

However, between 1927 and 1930, most men, equipment, and moved to Paducah, Kentucky, devastating the town of Water Valley. [heritage p?] Since the 1930s,

Comment [LEM78]: Don't forget to fix this.

Comment [LEM79]: Don't forget to fix this.

Comment [LEM80]: Don't forget to fix this.

Comment [LEM81]: Looks like the rest of this sentence is missing.

The Families

Intro -

Comment [LEM82]: Don't forget to fix this.

By 1890, Yocona Cotton Mills was one of ~~there were sixteen~~ 16 cotton and woolen mills in the state, employing 7,226 workers. Railroad construction also showed significant gains.

Formatted: Font: Not Bold

~~But~~ However, in spite of these advancements, the great majority of Mississippians—both black and white—remained tied to the land and to cotton. Immediately after the Civil War, the value of land was so low that thousands of acres were lost because people could not even pay the taxes on their property. Gradually land values began to rise; ~~b~~ But at the same time, the price of cotton was steadily declining, and many farmers were forced into

sharecropping. ^H 15 Sansing

Comment [LEM83]: I can't find the open quotation mark to go with this close mark.

Portrait of the community as seen in the 1910 census

Children working

Comment [LEM84]: Don't forget to fix this.

“Prior to passage of the 1908 law, factory managers liked to hire children because children worked cheap. In 1896, for example, child textile workers earned an average of 31 cents per ~~eye~~ day, compared with 47 cents per day for women, and 67 cents for men. “ [Cresswell]

Comment [LEM85]: Don't forget to fix this.

Cook Family

Eubanks Family

Comment [LEM86]: Don't forget to fix this.

IV. Continuing the Story

Asdf

Comment [LEM87]: Don't forget to fix this.

V. ENDNOTES

1. From various sources including family lore, 1910 census records, and the research of Regina Higgins Knight Walker. **Not sure how to cite** – I will have to try to find out.

Comment [LEM88]: I started editing this but decided it would be better to proof when you're done—too many potential changes as you finish up the thesis. Also, I may be able to scan in some pages from my Chicago Manual of Style that address this and send to you. If you have this book, it will tell you what you need to know in Chapter 17. (I have the 15th edition, which is still the latest one.)

Formatted: Highlight

2. Public History Resource Center, "What is Public History,"

http://www.publhistory.org/what_is/definition.html [accessed 7 June, 2009].

3. Dunbar Rowland, *The Official and Statistical Register of the State of Mississippi*

[Nashville: Press of Brandon Printing Company, 1912], **page number**

Comment [LEM89]: Don't forget to fix this.

4. Various sources such as newspaper articles and Sanborn maps. **I will have to work on**

citation.

Formatted: Highlight

5. National Archives, "Digital Copies Search (enter search terms Lewis Hine),"

<http://arcweb.archives.gov/arc/action/BasicMultimediaSearchForm> [accessed 8 June, 2009].

Library of Congress, "Prints & Photographs Online Catalog – National Child Labor

Committee Collection," <http://lcweb2.loc.gov/pp/nclhtml/nclcabt.html> [accessed 7 June,

2009].

5. Public History Resource Center, http://www.publhistory.org/what_is/definition.html

(accessed June 3, 2009)

6. Steve Krug, *Don't Make Me Think: A Common Sense Approach to Web Usability, 2nd Edition* [Berkeley: New Riders Publishing, 2006]

9. Douglas Van Duyne, *The Design of Sites: Patterns, Principles, and Processes for Crafting A Customer-Centered Web Experience* [Boston: Addison-Wesley, 2003] 31-59. (–

Also based upon the author's professional work life. Additionally, for discussions of best practice, see...)

Comment [LEM90]: Is this out of order?

7. Van Duyne, 72.

8. Jeffrey Rubin, *Handbook of Usability Testing: How to Plan, Design, and Conduct Effective Tests* [New York: John Wiley & Sons, Inc., 1994] 25-26

9. Rubin, 217-218.

..... first section ends here

Comment [LEM91]: Don't forget to fix this.

11 *Water Valley Progress-Itemzer* (?) "Fire Destroys Yocona Mill", Thursday, April 29, 1926

Comment [LEM92]: Don't forget to fix this.

12 *North Mississippi Herald*, "Big Yocona Mills Threatened by Fire", Friday, January 13, 1911

13 *Yalobusha Democrat*, "A \$25,000 Loss", May 29, 1930

14 *Biographical and Historical Memoirs of Mississippi, Volume II*, by xxx. (originally The Goodspeed Publishing company, 1891, Chicago) Reprinted 1978 by The Reprint Company, Spartanburg, South Carolina, 1978 both are page 192

Comment [LEM93]: Don't forget to fix this.

15 Sansing, David G. *Mississippi: Its people and Culture*. Minneapolis: T.S. Denison & Company, Inc. 213-214.

16 Kemp, John R. *Lewis Hine: Photographs of Child Labor in the New South*, Jackson, MS: University Press of Mississippi, 1986.

17 Harding-McGowan, Janice, "Mill Towns," *The Encyclopedia of Southern History*, edited by David C. Roller and Robert W. Twyman, 822. Baton Rouge, LA and London, England: Louisiana State University Press, 1979.

18. 1870 U.S. census, Yalobusha County, Mississippi, population schedule, civil division? Township 11, p. 18, p. 8b stamped, dwelling 137, family 140, Andrew J. McConnico and Mark. A. Ross; digital image, *HeritageQuestOnline.com*. (url: accessed 23 February 2009): citing NARA microfilm publication M593, roll 754.

19 1870 U.S. census, Yalobusha County, Mississippi, population schedule, Township 11, p, 37, p. 18 stamped, dwelling 286, family 294, Nathaniel Burgland; digital image, HeritageQuestOnline.com. (url?: accessed 23 February 2009): citing NARA microfilm publication M593, roll 754.

20 1932 Sanborn map

21 1932 corrected Sanborn map

22 1870 U.S. census, Yalobusha County, Mississippi, population schedule, Township 11, p. 130, p. 64 stamped, dwelling 928, family 970, Theodore Lewis; digital image, HeritageQuestOnline.com. (url?: accessed 24 February 2009): citing NARA microfilm publication M593, roll 754.

23. Busbee, Westley, F. Jr., *Mississippi A History*, Harlan Davidson, Inc., Wheeling, Illinois, 2005, p. 185.

24. Platt Book, WV Chancery Court, Book 4, p 132.

25. Brown, Julia. "Reconstruction in Yalobusha and Grenada Counties," *Publications of the Mississippi Historical Society*, Vol XII, Franklin L. Riley, editor, 1912.

26. Yocona vs Seaman

27. *Appleton's Annual Cyclopedia and Register of Important Events of the Year 1883*. New Series, Vol VIII. New York: D. Appleton and Company, 1886.

28. Interview with Thelma Patton Paris, Oakland Mississippi, year.

29. Sanborn Fire Insurance Map, Water Valley Mississippi, 1885.

30 based on descriptions in Sanborn maps and 1900 census, and 1901 ?? report

...

Use Kate T. book first – use Elizabeth's book for other kinds of records like the Goodspeed book (get Elizabeth's cheat sheet)

Appendix A.

Usability Plan and Script

(placeholder)

Bibliography

Krug, Steve. *Don't Make Me Think: A Common Sense Approach to Web Usability, 2nd Edition*. Berkeley: New Riders Publishing, 2006.

Rowland, Dunbar, *The Official and Statistical Register of the State of Mississippi*. Nashville: Press of Brandon Printing Company, 1912.

Rubin, Jeffrey. *Handbook of Usability Testing: How to Plan, Design, and Conduct Effective Tests*. New York: John Wiley & Sons, Inc., 1994] 25-26

Van Duyne, Douglas. *The Design of Sites: Patterns, Principles, and Processes for Crafting A Customer-Centered Web Experience*. Boston: Addison-Wesley, 2003.

..... first section ends here

VITA

Janice Quick was born in Shreveport, Louisiana, the daughter of Harold Quick and Mary Patton Quick. At age eight, her family moved to Memphis, Tennessee, to be closer to extended family in Memphis and north-central Mississippi. Janice received a Bachelor of Arts degree with a major in Sociology from Memphis State University (now the University of Memphis) in 1972. ...